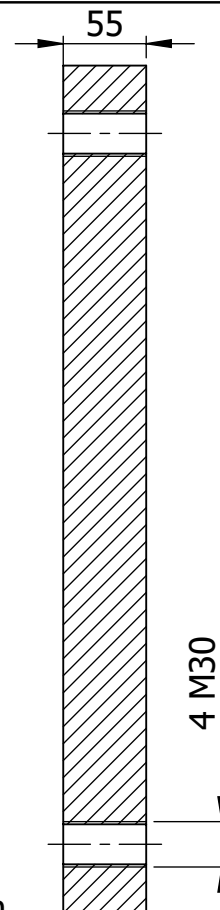


## SECTION A-A



ITEM: 02 Hull shim

Qty: 1

Material: S235JR


Protection: -

Weight: 59.49 kg

### NOTA:

- \* General tolerances without specific indication: ISO 2768 mK
- \* General roughness unless otherwise indicated: Ra 12,5 ( Gross )
- \* Grind down the edges that are not machined with R:2 to R:5

" NOTICE : Information herein presented is confidential, proprietary information of KLEY-FRANCE. Any person accepting this information is required to accept the same in confidence, to agree to make no disclosure, use, or duplication thereof except as authorized by K-F and to return the same on request"

A	28/10/2024	First issue	GPL	-	-
REV.	DATE	MODIFICATION	AUTHOR	CHECKED	APPROVED
<div> LIFTING SOLUTIONS</div> <div>Immeuble Le Concorde 4, rue Jacques Daguerre 92500 RUEIL-MALMAISON (F) TEL: +33 (0) 1.41.39.86.70 www.kleyfrance.fr</div>		PROJECT			
		57-IFR-23			
		Treuil Grand Fond N/O Pourquoi Pas ?			
		TITLE			
		EQUIPMENTS WT			
		Cale carlingage pont PLT			
		SCALE	SIZE	NUMBER	
		1:5	A4	854 F 4302	
CUSTOMER REF:		Jouvence du N/O « Pourquoi Pas »			SHEET 1 OF 1